

Libilife

DIETARY SUPPLEMENT



"This product is a nutritional supplement, is not a medicine and it does not replace a balance diet."

¿Why choose Lifehuni supplements?

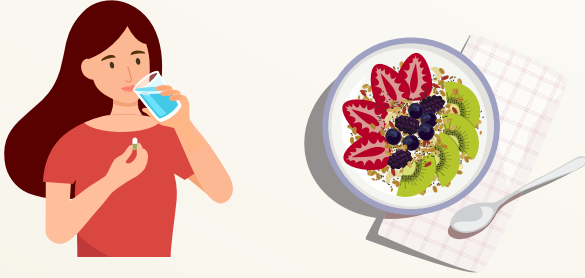
Our dietary supplements are products made up of nutrients, which are intended to supply essential elements to our organism for the performance of its functions, in most people these nutrients are poorly incorporated through the usual diet.

Presentation

Net content 60 capsules
Made in Colombia.

Suggested Use

Take two (2) capsules daily,
before or after meals.



Recommendations

- Always follow the instructions on the product label.
- Keep in a cool, dry place.
- Keep out of reach of children.
- To maintain the freshness, keep the jar tightly closed.
- People with any special health condition should consult their doctor before taking this product.
- This product is a dietary supplement, it is not a medicine and it doesn't replace a balanced diet.

Learn more at

@Lifehuniusa



www.lifehuni.com/usa

Directions: Adults, take two (2) capsules before or after meals daily.

SUPPLEMENT FACTS

Serving size 2 capsules

Suggested use: for adults only.

Amount per serving

% Daily Value

GUARANA DRY EXTRACT

(*Paullinia Cupana Kunth.*) Seeds

MACA ROOT (*Lepidium Meyenii*) Root

L-ARGININE

TAURINE

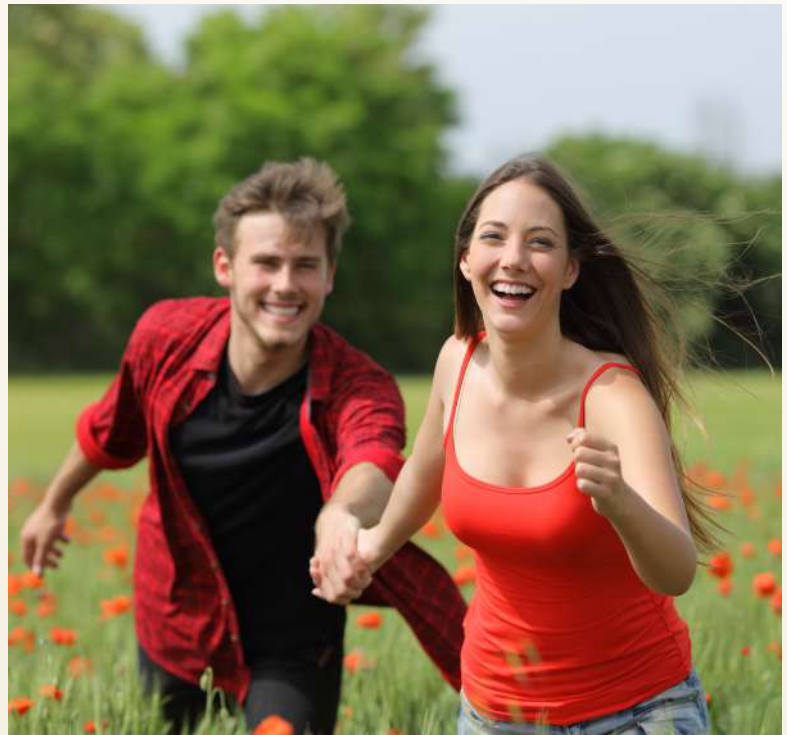
NIACIN (as Nicotinic acid)

ZINC

VITAMIN E (as Alpha Tocopherol Acetate)

Other Ingredients: Magnesium stearate 20mg, starch 20mg.

CAN CAUSE HIPERSENSITIVITY



Benefits

Cada porción ofrece extracto seco de Guaraná,
L-Arginina, Taurina, Niacina, Zinc, Vitamina E.


Lifehuni